

IELTS General Training Volume 3 Reading Practice Test 1

HOW TO USE

You have 2 ways to access the test

1. Open this URL <https://link.intergreat.com/ZVKRL> on your computer
2. Use your mobile device to scan the QR code attached



READING PASSAGE 1

You should spend about 20 minutes on Questions 1- 14, which are based on Reading Passage 1 below.



Accommodation

Questions 1 – 3

Use information in the description below to answer Questions 1 to 3. Write your answer in boxes 1-3 on your answer sheet.

Morpeth is today a small town about two hours' drive north of Sydney. The town of Morpeth grew from an original 2000 acres of land given to an English army officer, Lieutenant Edward Close (1790-1866), in 1821. During the 1830s and 1840s Morpeth became a major river port, due to its favourable location. Produce, hides and timber were brought to Morpeth from inland New South Wales and shipped down the Hunter river to the coast and then to Sydney. However, in 1870 a railway line reached the town, and the importance of river shipping began to decline. Today, Morpeth, with its beautiful old buildings, is a popular tourist destination.

Questions 4 -7

There are four advertisements on the next page for places to stay near Morpeth.

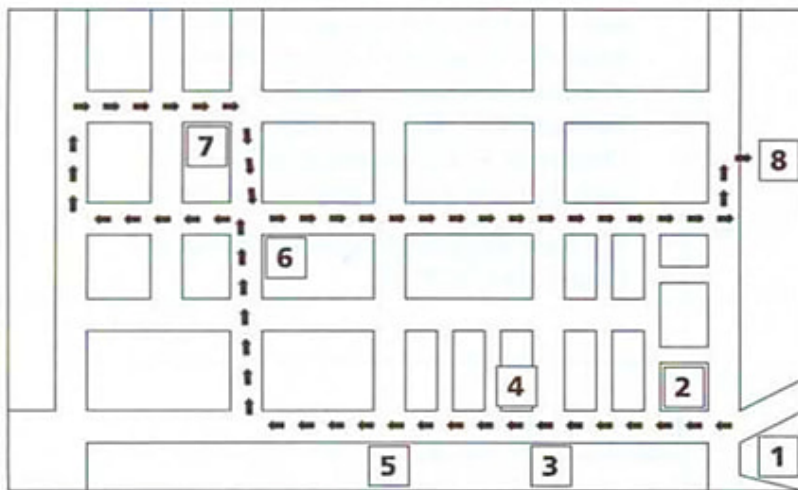
Answer the questions below by writing the letters of the appropriate advertisements in boxes 4-7 on your answer sheet.

WHERE TO STAY	Accommodation
---------------	---------------

<p>A</p> <p>Country Comfort Inn, Hunter Valley</p> <p>The Country Comfort Inn, Hunter Valley, is a beautifully restored 125-year-old building just 20 minutes from the vineyards.</p> <p>Formerly an orphanage, the Inn is set on 10 acres of landscaped gardens complete with pool, sauna, tennis court, spa, gym, billiard room, guest lounge, fireplace, cocktail bar, and two restaurants. Special packages available.</p> <p>New England Highway, Maitland.</p> <p>Call toll free 1800 065 064 or (049) 32 52 88</p>	<p>B</p> <p>Siesta Motel</p> <p>“Spend a night – not a fortune”</p> <p>That’s the Budget Motel chain motto. The Siesta Motel, rated 3-star, is conveniently placed at the gateway to tire winery district and nearby to the historic towns of Morpeth and Wollombi.</p> <p>The family-owned and operated Siesta offers air – conditioned comfort and a friendly atmosphere. A free light breakfast is delivered to your suite and excellent meals are available at the Maitland City Bowling Club next door. Quality of accommodation is assured and the tariff is the lowest in the district.</p> <p>258 New England Highway, Maitland.</p> <p>Phone (049) 32 83 22</p>
<p>C</p> <p>Endeavour East Maitland Motel</p> <p>28 modern, comfortable 3-star units which open onto the swimming pool and barbeque area. All units feature TV and videos, air-conditioning, 2 with spas.</p> <p>Fully licensed restaurant with cocktail bar and lounge is open 7 nights. Close to all amenities.</p> <p>New England Highway, East Maitland.</p> <p>Phone (049) 33 54 88</p>	<p>D</p> <p>Eskdale Country Cottages</p> <p>Rustic cottages secluded amongst gum trees provide quietness and privacy on 200 acres. The cottages are located on the historic beef cattle property, “Eskdale”, nestled in the Williams Valley. Each cottage is completely self-contained having 2 bedrooms, full kitchen facilities, and sitting rooms with TV and video, and offers comfortable rural accommodation to those who enjoy the delights of the country yet still retain access to the city. Situated close to the towns of Morpeth, Maitland, Port Stephens & rainforests around Dungog.</p> <p>Nelson Plains Road, Seaham NSW 2324.</p> <p>Phone (049) 88 62 07, 88 62 09</p> <p>Fax (049)88 62 09</p>

Read the description below of the town of Morpeth and answer the questions that follow.

The best way to see Morpeth is to take the Morpeth Heritage Walk. This covers about three kilometres, and takes visitors past many beautiful historical buildings. Starting at Fig Tree Hill, which has picnic facilities, stroll past the Surgeon's Cottage, built in 1845, formerly home of the local doctor, now shops. From there you will come to Morpeth Bridge, erected in 1870, which replaced a ferry boat. Opposite it on the right is the Courthouse, still in use today. Continue your walk past the historic Railway Station, then turn into George Street. Stroll past gracious houses until you come to the Church of the Immaculate Conception on your right, built of bricks made in Gosford. Continuing up George Street, you come to the shopping district; browse through the shops or stop for refreshment. Your tour of Morpeth will finish at magnificent Closebourne House, built in 1826 by Lieutenant Edward Close.



Tourist attractions

- A Fig Tree Hill
- B Ferry Boat
- C George Street
- D Gosford
- E Church of the Immaculate Conception
- F Closebourne House
- G Morpeth Bridge
- H shopping district
- I Surgeon's Cottage
- J Railway Station
- K Courthouse

Questions 1-3

Use information in the description below to answer Questions 1 to 3.

Use **NO MORE THREE WORD AND/OR NUMBER**

Write your answer in boxes 1-3 on your answer sheet

When was Lieutenant Close given the land on which Morpeth grew?

1 _____

On what river is Morpeth situated?

2 _____

When did trains first get to Morpeth?

3 _____

Questions 4-7

Access <https://ieltsolinetests.com> for more practices

There are four advertisements on the next page for places to stay near Morpeth.

Answer the questions below by writing the letters of the appropriate advertisements in boxes 4-7 on your answer sheet.

4 Which place to stay has restaurant besides Country Comfort Inn?

5 Which place claims to offer the cheapest rate?

6 For more information, to which place can you telephone free of charge?

7 At which place can the guests cook their own food?

Questions 8-14

Using information from the text, fill in the names of the numbered tourist attractions on the map. Write your answers in boxes 8-14 on your answer sheet. The first one has been done for you as an example. Note: there are more names than you will need

	Tourist attractions
A	Fig Tree Hill
B	Ferry Boat
C	George Street
D	Gosford
E	Church of the Immaculate Conception
F	Closebourne House
G	Morpeth Bridge
H	shopping district
I	Surgeon's Cottage
J	Railway Station
K	Courthouse

Focus on the number(2,3,4,...) after your answers, they are the number of the place on the map.

Example: 1 = A

[Access https://ieltsionlinetests.com](https://ieltsionlinetests.com) for more practices

8 2

9 3

10 4

11 5

12 6

13 7

14 8

Reading Passage 2

Read the information about the Numeracy Centre below, and answer Questions 15-27.



Numeracy Centre

Many business and marketing courses require a knowledge of introductory statistics, computing or mathematics. If you feel inadequately prepared for your course, you can get help from the Numeracy Centre, which offers FREE elementary help in maths and statistics. Grab a timetable from the Centre and drop in when it suits you.

COURSE A

The first course available to students is a Revision Course in Basic Maths. This 3-hour lecture will review mathematical concepts necessary for elementary statistics, such as fractions, area and percentages up to a Year 8 level of mathematics. It is not necessary to book, so feel free to drop in. This session is FREE!

COURSE B

For those students doing marketing courses, and other courses requiring statistical analysis, there is the Bridging Course in Statistics for Marketing. This three-day course introduces ideas in elementary statistics to provide a starting point for further developments in statistical skills later on in other courses. The course is run in sessions of three hours, in the form of a one-hour lecture followed by a two-hour tutorial. Examples will be drawn from the reference books listed. The tutorials will be interactive where possible (eg. drawing random samples from the population of numbered cards in class) with hands-on experience of data manipulation using MINITAB on a bank of PCs.

COURSE C

[Access https://ieltonlinetests.com for more practices](https://ieltonlinetests.com)

Statistics for the Practitioner is slightly different to the previous course, which must be completed before this course. This course is largely non-mathematical.

It will instead concentrate on the interpretation and application of statistics rather than on computation. The statistical package MTNITAB will be used as a teaching tool. This course will be conducted over two days in the form of workshops and small group discussions, with a strong emphasis on hands-on experience of data manipulation using computers.

COURSE D

A further course of interest to many students is English for Computer Studies. Students with English as their second language who will be needing elementary computing for their courses are encouraged to enrol in this 8-hour course. Students will learn through workshops giving hands-on experience. The cost of the course is \$15 which includes notes and refreshments.

Questions 15-22

Below is a chart summarising information about the Numeracy Centre courses.

Complete the required details using information from the passage.

Write your answers in boxes **15-22** on your answer sheet.

Course	Cost	Number of hours or days	Name of previous studies required	Teaching Method
A	15 _____	3 hours	None	16 _____
B		17 _____ hours	None	lecture and 18 _____
C		2 days	19 _____	20 _____ and small groups
D	\$ 21 _____	8 hours	None	22 _____

Questions 23-27

Courses **A** to **D** are each aimed at helping a specific group of students.

Below is a list of different students. Match the students to the course that would help them most.

In boxes **23-27** on your answer sheet write the letter **A, B, C** or **D** for the number of the course, or **N** if there is **no course available for the student's needs**.

[Access https://ieltsionlinetests.com](https://ieltsionlinetests.com) for more practices

23 Narelle, from Taiwan, has to use a computer to do assignments in her business studies classes.

24 Joe, who left high school 10 years ago, wants to brush up on his maths before he starts his studies for the year.

25 Jenny needs an advanced course on computer graphics for her studies in Graphic Design.

26 Geoff, who has to read many articles containing statistics, needs to know how to interpret and apply the facts and figures.

27 Bob needs to know how to perform some of the basic statistic equations for the assignments in his business course.

Reading Passage 3

Read the passage below and answer Questions 28-40 that follow.



Business Planning

What is a Business plan?

It is probably best described as a summary and evaluation of your business idea, in writing.

Preparation of a business plan is the first and most important task for the business starter. The plan should include details concerning the industry in which you operate, your product or service, marketing, production, personnel and financial strategies.

What purpose does it serve?

A business plan allows you to think through all the factors of a business, and to solve potential problems before you come to them. It will identify strengths and weaknesses and help to assess whether the business can succeed. It is a blueprint for starting, maintaining or expanding a business. It is a working plan to use in comparing your achievements to the goals you set. It should provide information required by financial institutions when finance is sought.

How to produce a Business plan

Step 1: Collect Information

Gather as much relevant information as possible concerning the industry in which you intend to operate (the number of businesses already operating, the size of their operations, where they are located). Use books, industry associations, and existing business owners to help you.

Collect all possible information regarding the market/s you are aiming for (who buys, why do they buy, what are the key features the customer looks for).

Learn all you can about the product/s or services you intend to produce, distribute or offer.

Step 2: Analysis

Read over all the material you have collected and decide what is relevant to your business idea. You may have to modify your idea depending on what your research shows. The key question to ask is:

“Can you design a business that will earn enough to cover costs and pay a wage and reasonable profit to you as proprietor?”

When Steps 1 and 2 are completed, you should have decided if there is a market for your product or service which is large enough and sufficiently accessible to make your new business financially worthwhile. Now you are ready to commit your plan to paper.

Step 3: Strategy Formulation

Decide how the business will operate. You should describe how the business will be managed, and the staff and organisational structure that will be in place. Diagrams may be useful to show how these areas will work. Don't forget to include the areas of responsibility for each member of staff. This is especially important if some of your staff will be family members.

There are three further parts that go together to make a comprehensive business plan:

A Marketing plan, which includes location, method of selling, packaging, pricing and so on. In all these areas you must be aware of consumer trends to make sure that your business does not become outdated or irrelevant.

An Operational plan, which describes the day-to-day running of the business. You should include supply sources, cost and quantities of materials, processes, equipment and methods of extending the services or products offered.

A Financial plan, which is a master budget for the operation and includes:

- cash flow forecast
- balance sheet
- profit and loss statement
- sources of finance
- sales forecast and target.

The financial aspects of the plan are most important and you should develop or access financial skills to make sure this part of your plan is accurate and realistic. Don't forget set-up costs and the money needed to see you through an initial period of low cash flow when calculating your first year's budget.

Update your Business plan

Nothing remains constant in business; circumstances change, markets change, fashions

[Access <https://ieltonlinetests.com> for more practices](https://ieltonlinetests.com)

change, methods change.

From time to time you must check your sources of information and reassess your business plan. What is relevant when you start is not necessarily so in five years' time. You may also need to revise targets and budgets if external factors (such as interest rates) vary.

Keep your information up-to-date and be prepared to change as circumstances demand. A business plan should be thought of as flexible, not fixed. If you use these steps to develop a business plan, changing it according to circumstances, you will be well on the way to a successful business.

Questions 28-34

Do the following statements agree with the views of the writer in the passage "Business Planning?"

In boxes 28-34 on your answer sheet write

YES	if the statement agrees with the views of the writer
NO	if the statement contradicts the views of the writer
NOT GIVEN	if it is impossible to say what the writer thinks about this

28 A business plan must be written down.

29 Creating a business plan is only necessary for a new business.

30 A business plan should include a diagram of your proposed office or shop layout.

31 A business should generate enough money to pay salaries, and some profit to the owner.

32 The roles of family members in the business must be clearly defined in the business plan.

33 You should expect not to earn much money in the first year.

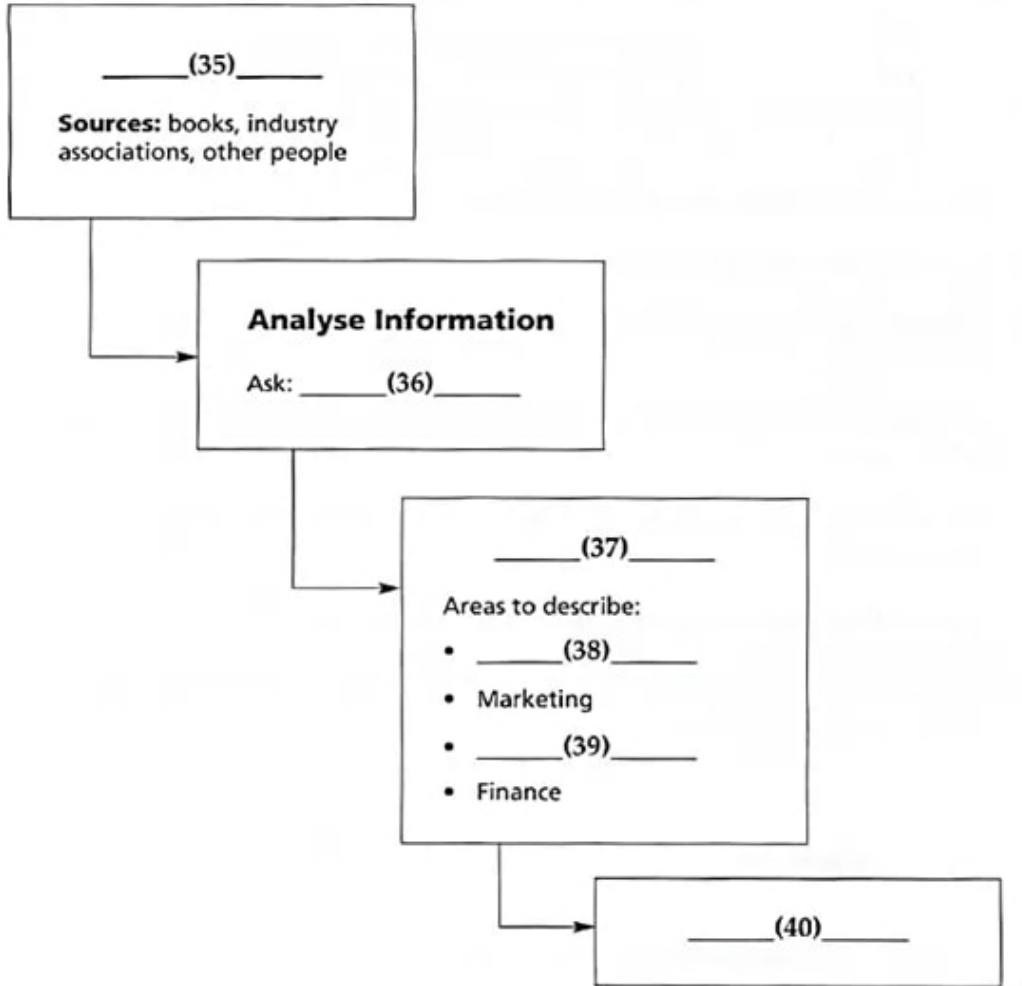
34 Once a business plan is finished, no further changes will need to be made to it.

Questions 35-40

The text describes how to make a business plan.

Choose the correct word or phrase from the box to complete the following flow chart of how to make a business plan.

Write its letter in boxes 35-40 on your answer sheet.



A	Advertising
B	Keep your business up-to-date
C	Find information
D	Create a sample product
E	Find a good location
F	Organisational structure
G	Can I find good staff?
H	Operations
I	Create your business plan
J	Can my business make enough money?

35

36

37

38

39

40



Solution:

Part 1: Question 1 - 14

- | | |
|--------|------------------------|
| 1 1821 | 2 (The) Hunter (River) |
| 3 1870 | 4 C |
| 5 B | 6 A |
| 7 D | 8 I |
| 9 G | 10 K |
| 11 J | 12 E |
| 13 H | 14 F |

Part 2: Question 15 - 27

- | | |
|--|---------------------------|
| 15 free | 16 lecture/3-hour lecture |
| 17 9/nine | 18 tutorial |
| 19 Course B / Statistics for Marketing | 20 workshops |
| 21 15/fifteen | 22 workshops |
| 23 D | 24 A |

25 N

26 C

27 B

Part 3: Question 28 - 40

28 YES

29 NOT GIVEN

30 NOT GIVEN

31 YES

32 YES

33 YES

34 NO

35 C

36 J

37 I

38 F

39 H

40 B