



# IELTS Mock Test 2022 January Writing Practice Test 2

## HOW TO USE

You have 2 ways to access the test

1. Open this URL <https://link.intergreat.com/NS8rN> on your computer
2. Use your mobile device to scan the QR code attached



# WRITING TASK 1

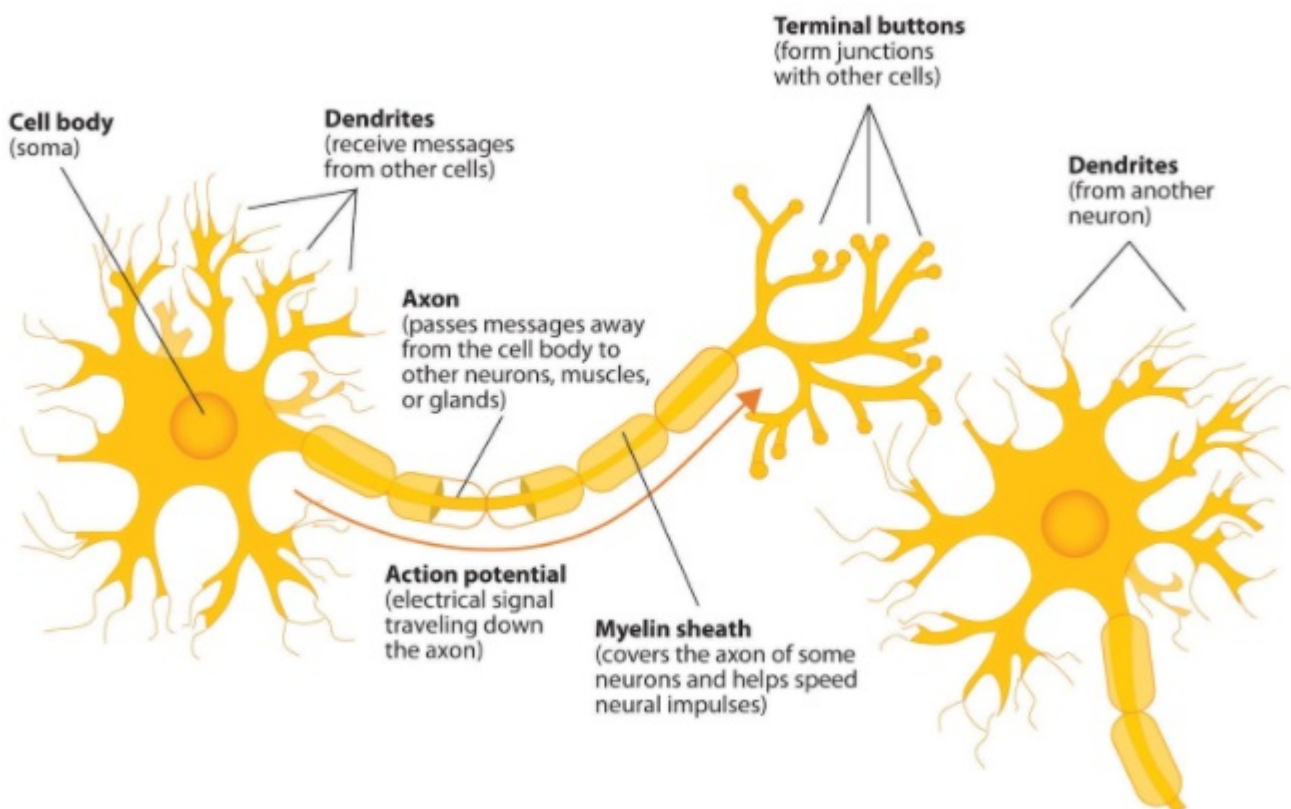
You should spend about **20** minutes on this task.

The diagram shows the components of a neuron and how it works

Write a report for a university, lecturer describing the information shown below.

Summarise the information by selecting and reporting the main features and make comparisons where relevant.

You should write at least **150** words.



# WRITING TASK 2

You should spend about **40** minutes on this task.

Write about the following topic.

*With the improvements in today's health care, society has to care for more and more elderly people.*

*Do you feel that society will be able to cope with the increase in numbers of elderly people today and how can it be managed?*

Give reasons for your answer and include any relevant examples from your own knowledge or

[Access https://ieltsionlinetests.com for more practices](https://ieltsionlinetests.com)

*experience.*

You should write at least **250** words.

# SAMPLE WRITING TASK 1

The line graph compares figures for daily travel by workers in the UK using three different forms of transport over a period of 60 years.

It is clear that the car is by far the most popular means of transport for UK commuters throughout the period shown. Also, while the numbers of people who use the car and train increase gradually, the number of bus users falls steadily.

In 1970, around 5 million UK commuters travelled by car on a daily basis, while the bus and train were used by about 4 million and 2 million people respectively. In the year 2000, the number of those driving to work rose to 7 million and the number of commuting rail passengers reached 3 million. However, there was a small drop of approximately 0.5 million in the number of bus users.

By 2030, the number of people who commute by car is expected to reach almost 9 million, and the number of train users is also predicted to rise, to nearly 5 million. By contrast, buses are predicted to become a less popular choice, with only 3 million daily users.

# SAMPLE WRITING TASK 2

In current society, the life expectancy in western countries has increased significantly. Also, fewer babies are being born, causing the relative percentage of elderly people to increase. These people have to be taken care of, causing the question to rise whether this number of elderly people can be cared for.

When people grow older, they can also develop more health issues, resulting in more visits to doctors and hospitals, and an increased usage of pharmaceuticals. Due to the current large numbers of elderly people, the pressure put onto health care systems is increasing. In many western countries, the state provides most of the health care system. Therefore with increasing numbers of old people, higher percentages of state funding have to be allocated to health care and this could cause shortfalls in other areas, for example education. This change in the distribution of money can therefore impact society negatively.

Society should be able to handle these changes. Governments will have been able to predict the changing demographic situations in their countries and plan accordingly. This might indeed lead to other sectors in society having money taken away from them, but caring for the elderly is one of the key responsibilities of today's governments. For the future, it might be necessary to ensure that an extra insurance charge is levied on people's salaries in order that any future financial shortfall is met. This would be unpopular, but would allow governments to have the necessary funds available.

In conclusion, society today and in the future should be well able to deal with caring for their elderly. It is only a question of careful long-term forecasting and planning.